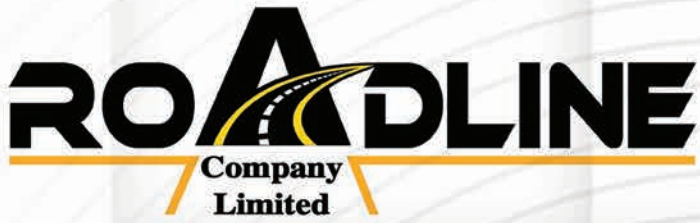


Road Line Factory



Road Line Machines Catalogue



www.roadlineco.com



Road Line Factory

ROADLINE
Company
Limited

شركة روه لاين المحدودة

Road Line - Company . Limited

Head Office Egypt

Alabor City- First Quarter

Aziz Egyptian street team

C.R 85595 T.C 504 - 528 - 696

Tel:+20132763286 Fax: +20132763287

Mob: +201010060540 - +201010070420

Email : sales@roadlinco.com

w w w . r o a d l i n e c o . c o m

Road Line Factory

COMPANY OVERVIEW



Roadline factory ,for road marking machines, is one of the largest and most deep-rooted factories in the Middle East and Africa.

Seeking development, Roadline factory combined originality , experience, and latest techniques. Moreover, these qualities have been handed down through generations.

Roadline factory has successfully become a global competitor in the field of manufacturing Roadmarking machiens and Boilers. The crew, including team leaders , employees, and workers who have proven competence, cooperate in order to achieve the best performance. Besides, trainings are given to the whole crew in the factory's training centers inside and outside the factory.

Roadline factory is also very keen to offer its employees the fullest and finest medical , social , and recreational services. Thus, these services positively affect the performance of employees and maintain their sense of belonging to the factory.

Since its inception, the factory has won the confidence of everyone(governmental and private bodies) . This is due to the factory's machinery that applies the latest scientific and technological methods , which make the factory able to implement the projects according to the conditions and technical specifications required in a timely manner.

This shows the factory's success and continued progress that result from the proper planning guided by good and flexible management . This also made Roadline stands on a solid ground to face other national and multinational factories. This is due to the factory's broad base of technical personnel that is qualified, trained, and equipped with the best and the latest modern technology.

We always do our best in order to reach the highest levels and be the focus of everyone. Being equipped with the best and latest methods and techniquesss, we are always ready to keep up the reputation of the factory. Finally, with God's help and support, we promise to be as everyone expected us to be.

Road Line Factory

ACTIVITIES

- 1 ALL PAINT MANUFACTURING MACHINES.
- 2 ALBUALARAT EPOXY AND MACHINERY MANUFACTURING.
- 3 FABRICATION AND INSTALLATION OF PAINT PRODUCTION LINES.
- 4 ALL PAINTS MACHINERY MAINTENANCE.
- 5 INSTALLATION OF METAL BARRIERS MANUFACTURING MACHINES.
- 6 FABRICATION AND INSTALLATION OF CERAMIC PRODUCTION LINES.
- 7 FABRICATION AND INSTALLATION OF PRODUCTION LINES CAT EYES.
- 8 FABRICATION AND INSTALLATION OF PRODUCTION LINES MARKER.
- 9 FABRICATION AND INSTALLATION OF PRODUCTION LINES PAINTINGS.
- 10 ALL MOLDS AND PAINTS CHOP.
- 11 A TRAINING COURSE IN THE IMPLEMENTATION OF ROAD PAINTS.
- 12 A TRAINING COURSE IN THE IMPLEMENTATION OF PAINTS AIRPORTS.
- 13 A TRAINING COURSE IN THE INSTALLATION OF SIGNAGE.
- 14 A TRAINING COURSE IN THE CALCULATION OF QUANTITIES PROJECTS.

Road Line Factory



ROAD Line Courses

خدماتنا المتميزة

تصنيع ماكينات الدهانات اليدوية

تصنيع ماكينات الدهانات الصغيرة

تصنيع ماكينات الدهانات الكبيرة

تصنيع قطع غيار جميع الماكينات

تصنيع خطوط إنتاج الدهانات

تصنيع خطوط إنتاج عيون القلط

تصنيع خطوط إنتاج الستمسونات

تصنيع ماكينات صهر البوتمين

تصنيع ماكينة خلط الإيبوكسى

صيانة جميع الماكينات الحرارية والباردة

دورة تدريبية فى تنفيذ الدهانات

دورة تدريبية فى تنفيذ عيون القلط

دورة تدريبية فى تصنيع الدهانات

دورة تدريبية فى تصنيع عيون القلط

دهان الطرق الحرارية

دهان الطرق الباردة

دهان المطارات

دهان مواقف السيارات

دهان البلدورات

الدهانات الخاصة

علامات السيراميكية

الجواجز المعدنية

لوحات ارشادية

لوحات تحذيرية

لوحات اسمية

عيون القلط الألمونيوم

عيون قلط الطاقة الشمسية

علامات أرضية ستمسونات

Road Line Factory

DAS CERTIFICATION



Quality Management Systems Certificate of Approval

This is to certify that the QMS of
Road Line Factory for Road Marking Machines
PO.Box : 11828, Elobour city : 1080,
Arab Republic of Egypt
Has been assessed and found to meet the requirements of
ISO 9001:2008

This certificate is valid for the following scope of operations:

Manufacturing, Supply & Installation of All Road Marking Machines & Training Courses e.g., Bitumen Melting, Sign Boards, Guard Rails & Epoxy Mixing Machines; Paint & Ceramic Production Lines & Its Spare Parts; Maintenance & After Sales Services

This certificate is the property of DAS Certification and is valid from 10th March 2016 until 9th March 2019 and remains valid subject to satisfactory annual Surveillance audits. Recertification audit before 10th February 2019, Certified since 10th March 2016

Date of Certificate Issue: 10th March 2016
1st Surveillance Audit Due: 10 Mar. 2017
2nd Surveillance Audit Due: 10 Mar. 2018
Certificate Valid until: 9th March 2019
Certificate Number: 68609/KSA/Q

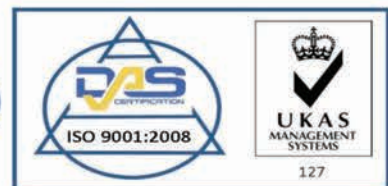
Authorised by:

Stan Wright
Chief Executive

DAS Certification

Date of Issue: 10th March 2016

Registration House, 22b Church Street
Rushden, Northamptonshire, NN10 9YT
Tel: 01933 381859
Email: info@dascertification.co.uk
Web: www.dascertification.co.uk
Company number: 03384526



Road Line Factory

DAS CERTIFICATION



Environmental Management System Certificate of Approval

This is to certify that the EMS of
Road Line Factory for Road Marking Machines
PO.Box : 11828, Elobour city : 1080,
Arab Republic of Egypt
Has been assessed and found to meet the requirements of
ISO 14001:2004

This certificate is valid for the following scope of operations:

Manufacturing, Supply & Installation of All Road Marking Machines & Training Courses e.g., Bitumen Melting, Sign Boards, Guard Rails & Epoxy Mixing Machines; Paint & Ceramic Production Lines & Its Spare Parts; Maintenance & After Sales Services

This certificate is the property of DAS Certification and is valid from 13th March 2016 until 12th March 2019 and remains valid subject to satisfactory annual Surveillance audits. Recertification audit before 13th February 2019, Certified since 13th March 2016

Date of Certificate Issue: 13th March 2016
Certificate Valid until: 12th March 2019
Certificate Number: 68609/KSA/E

Authorised by:

A handwritten signature in blue ink, appearing to read 'Stan Wright'.

Stan Wright
Chief Executive

DAS Certification

Date of Issue: 13th March 2016

Registration House, 22b Church Street
Rushden, Northamptonshire, NN10 9YT, UK
Tel: 01933 381859
Email: info@dascertification.co.uk
Web: www.dascertification.co.uk
Company number: 03384526



Road Line Factory

DAS CERTIFICATION



Occupational Health & Safety Certificate of Approval

This is to certify that the OHSAS of
**Road Line Factory for Road Marking
Machines**

PO.Box : 11828, Elobour city : 1080,
Arab Republic of Egypt

Has been assessed and found to meet the requirements of

BS OHSAS 18001:2007

This certificate is valid for the following scope of operations:

Manufacturing, Supply & Installation of All Road Marking Machines & Training Courses e.g., Bitumen Melting, Sign Boards, Guard Rails & Epoxy Mixing Machines; Paint & Ceramic Production Lines & Its Spare Parts; Maintenance & After Sales Services

This certificate is the property of DAS Certification and is valid from 17th March 2016 until 16th March 2019 and remains valid subject to satisfactory annual Surveillance audits. Recertification audit before 17th February 2019.

Certified since 17th March 2016

Date of Certificate Issue: 17th March 2016
Certificate Valid until: 16th March 2019
Certificate Number: 68609/KSA/HS

Authorised by:

A blue ink signature of Stan Wright.

**Stan Wright
Chief Executive**

DAS Certification

Date of Issue: 17th March 2016

Registration House, 22b Church Street
Rushden, Northamptonshire, NN10 9YT, UK
Tel: 01933 381859
Email: info@dascertification.co.uk
Web: www.dascertification.co.uk
Company number: 03384526



Road Line Factory

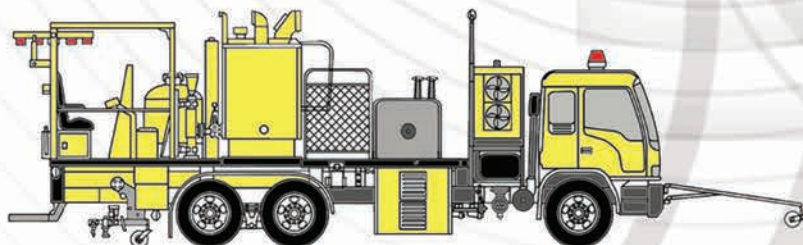


ROAD LINE MACHIN
3500-1

Thermoplastic



Made in Egept



ROAD LINE MACHIN
3500-1

Example for an individually built and configured roadmarking truck

here:
... equipped with pressureless double preheater (2 x 1500),
for sprayable thermoplastics

Technical Data

Engine:
on enquiry

Air output:
till 5 400 l/min

Pressurised glass bead containers:
from 350 l

Road Line Factory



ROAD LINE MACHINE
5000-3

Thermoplastic



Made in Egypt



ROAD LINE MACHIN
5000-3

Example for an individually built and configured roadmarking truck

here:

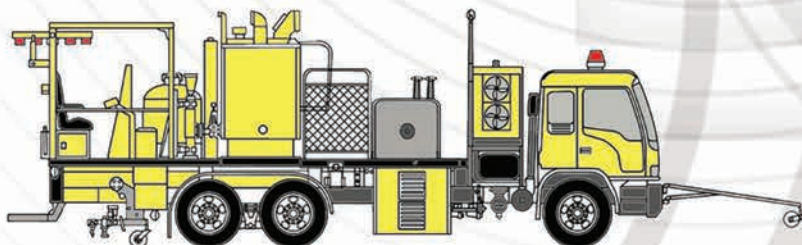
... equipped with pressureless double preheater (2 x 1250), for sprayable thermoplastics

Technical Data

Engine:
on enquiry

Air output:
till 5 400 l/min

Pressurised glass bead containers:
from 350 l



www.roadlineco.com

Road Line Factory

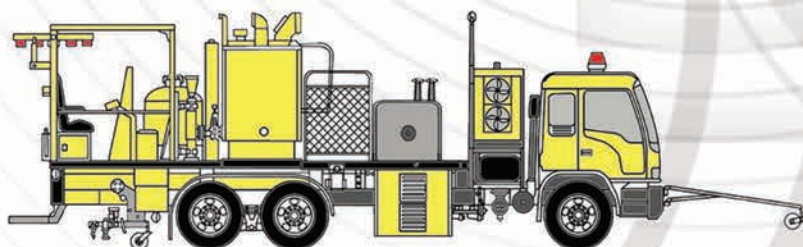


ROAD LINE MACHIN
3000-3

Thermoplastic



Made in Egypt



ROAD LINE MACHIN
3000-3

Example for an individually built and configured roadmarking truck

here:

... equipped with pressureless double preheater (2 x 1500), for sprayable thermoplastics

Technical Data

Engine:
on enquiry

Air output:
till 5 400 l/min

Pressurised glass bead containers:
from 350 l

www.roadlineco.com

Road Line Factory

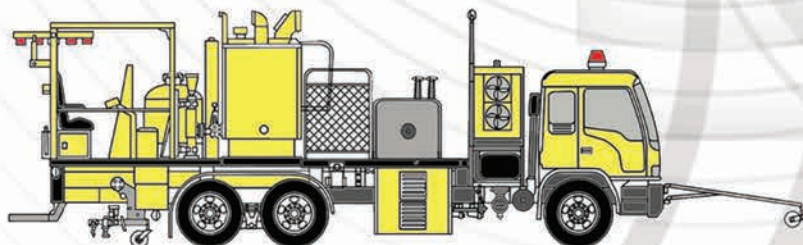


ROAD LINE MACHINE
2500-2

Thermoplastic



Made in Egypt



ROAD LINE MACHINE
2500-2

Example for an individually built and configured roadmarking truck

here:

... equipped with pressureless double preheater (2 x 2000), for sprayable thermoplastics

Technical Data

Engine:
on enquiry

Air output:
till 5 400 l/min

Pressurised glass bead containers:
from 350 l

Road Line Factory



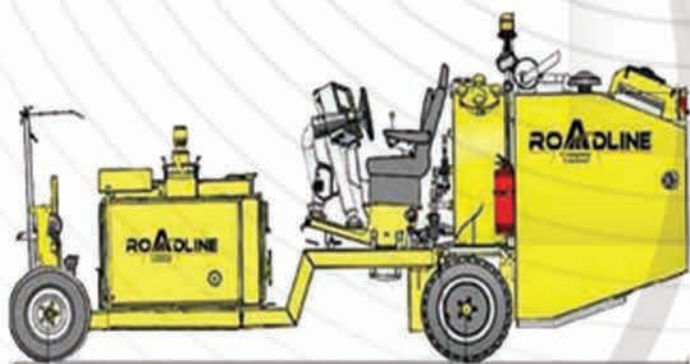
ROAD LINE MACHIN

33-4

Thermoplastic



Made in Egypt



ROAD LINE MACHIN

33-4

Road Marking 4-cylinder 3800 cm³,
Kubota Turbo diesel engine,
water-cooled,
low-emission
(Standards EU Stage IIIA bzw. TIER 3)

74.0 kW at 2600 rpm

Air output, alternatively:
1 080 up to 3 500 l/min
at 7,5 bar;
compressed-air cooler

Pressurised glass bead container:
2 x 150 l; or
2 x 170 l (rectangular)

Dimensions
(L x W x H mm):
5975 x 1420 x 2410
(dependent on equipment)

www.roadlineco.com

Road Line Factory



ROAD LINE MACHINE

1100

Thermoplastic Poiler



Made in Egypt



ROAD LINE MACHINE

1100

Vertical preheaters are heated directly or indirectly (with heat transfer oil) by gas- or oil burners

Weights
(approx.)

ID1100:
1 845 kg / 2 235 lbs
(incl. heat transfer oil,
without power station)

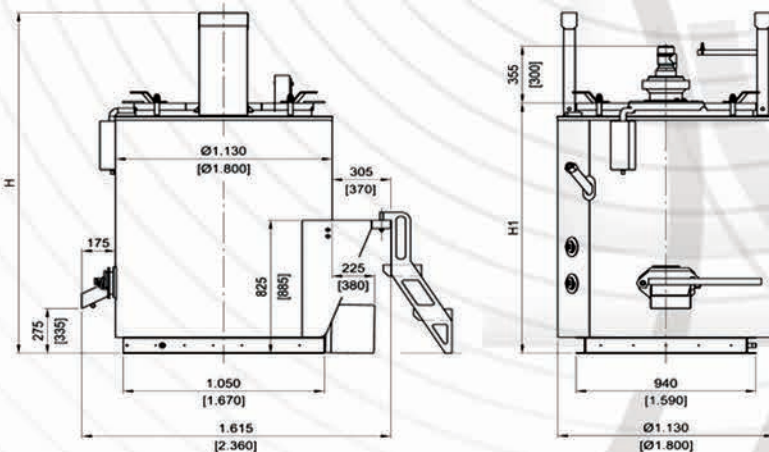
ID810:
1 190 kg / 2 620 lbs
(incl. heat transfer oil,
without power station)

ID600:
1 015 kg / 2 420 lbs
(incl. heat transfer oil,
without power station)

D350:
445 kg / 980 lbs
(without power station)

D520:
640 kg / 1 410 lbs
(without power station)

Power Station 3 kW:
115 kg / 255 lbs
Power Station 10 kW:
375 kg / 825 lbs



Road Line Factory



ROAD LINE MACHIN

33-2

Cold Paints



Made in Egypt



ROAD LINE MACHIN

33-2

Road Marking 4-cylinder 3800 cm³,
Kubota Turbo diesel engine,
water-cooled,
low-emission
(Standards EU Stage IIIA bzw. TIER 3)

74.0 kW at 2600 rpm

Air output, alternatively:
1 080 up to 3 500 l/min
at 7,5 bar;
compressed-air cooler

Pressurised glass bead container:
2 x 150 l; or
2 x 170 l (rectangular)

Dimensions

(L x W x H mm):
5975 x 1420 x 2410
(dependent on equipment)

www.roadlineco.com

Road Line Factory



ROAD LINE MACHINE



ROAD LINE MACHINE
Guard Rails



ROAD LINE MACHINE
Manual Machine



ROAD LINE MACHINE
Manual Machine

Made in Egypt

www.roadlineco.com

Road Line Factory



ROAD LINE MACHINE



ROAD LINE MACHINE
Driver Machine



ROAD LINE MACHINE
Manual Machine



ROAD LINE MACHINE
Sweeper Machine



ROAD LINE MACHINE
Driver Machine

Made in Egypt

www.roadlineco.com

Road Line Factory



ROAD LINE MACHINE



ROAD LINE MACHINE
PotMIN Machine



ROAD LINE MACHINE
Epoxy Machine



ROAD LINE MACHINE
Hand Laner



ROAD LINE MACHINE
Compressor Drill

Made in Egypt

www.roadlineco.com

Road Line Factory



ROAD LINE MACHIN
ASPHALT

Asphalt Crack Filling Machines



ROAD LINE MACHINE
Asphalt Machine



ROAD LINE MACHINE
Asphalt Machine



ROAD LINE MACHINE
Asphalt Machine



ROAD LINE MACHINE
Asphalt Machine

Made in Egypt

www.roadlineco.com

Road Line Factory

R ROAD LINE Paint Factories



R ROAD LINE Paints
Mixer-50/8



R ROAD LINE Paints
Mixer-30/8



R ROAD LINE Paints
Mixer-20/8



R ROAD LINE Paints
Mixer-25/8

Made in Egypt

www.roadlineco.com

Road Line Factory

Road Line Machinery Catalogue

Arab republic of Egypt Obour City

C.R 85595 T.C 504-528-696

P.Box :11828 Obour : 1080

Tel: +2-013-276-3286 Fax: +2-013-276-3287

www.roadlineco.com